



Idle Air Control (IAC)

Technology

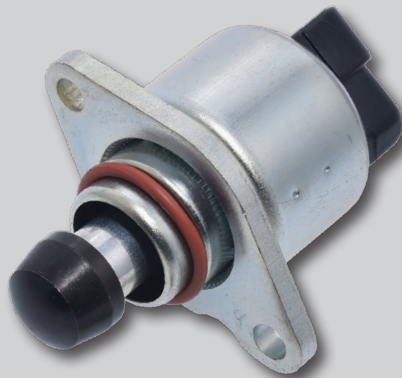
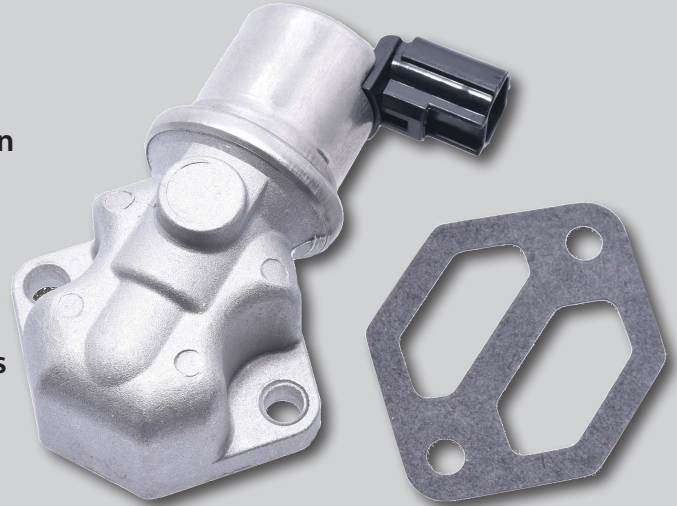
- 100% engineered and tested to OE specifications in fit, form, and function
- Manufactured with the highest quality materials designed to hold up under any condition

Marketing

- Competitively priced against all industry programs
- Full Service Kits® (FSK®) - Idle Air Control plus vehicle side mating pigtail

Coverage

- Complete program with 150+ SKUs
- 100+ FSK SKUs available
- Extensive coverage for car & light truck, domestic and import, gas, diesel, flex fuel & LPG/CNG
- Coverage spanning from 1980 to present year



WALKER PRODUCTS, INC. • 525 WEST CONGRESS STREET • PACIFIC, MO 63069

U.S. Corporate Office: 636-257-2400 • Fax: 636-257-6211

Customer Service: 636-257-1700 • Technical Support: 844-252-0114

U.K. Sales Office and Distribution Center: +44 (0) 121-459-8006 • saleseurope@walkerproducts.com

Oficinas para Mexico: +52-72-2402-2167 • Soporte tecnico y servicio al cliente en Mexico: +52-72-2207-8957

www.walkerproducts.com

QUALITY • COVERAGE • SUPPORT

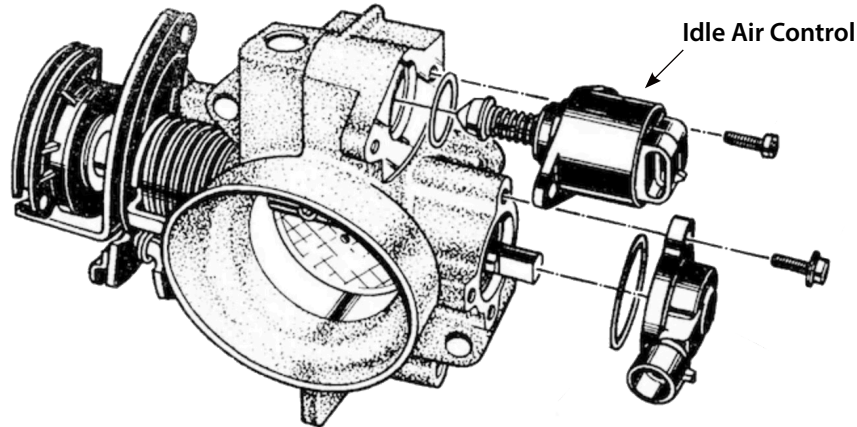


WHAT DOES YOUR IDLE AIR CONTROL DO?

The Idle Air Control Motor is controlled by the ECU to precisely control the idle speed when varying loads are placed on the engine. This is to ensure a smooth idle.

WHERE IS YOUR IDLE AIR CONTROL LOCATED?

The Idle Air Control Motor is located on the intake manifold near the back of the throttle body.



WHY DOES YOUR IDLE AIR CONTROL FAIL?

Common causes of Idle Air Control Motor failure are carbon build-up, rust, or debris. Another symptom is partial or complete jam of the actuator.

SYMPTOMS OF A FAULTY IDLE AIR CONTROL?

The vehicle engine will surge or stall, idle conditions will be poor, and the check engine light will be illuminated.

WHY IS THE WALKER IDLE AIR CONTROL BETTER?

- Every Idle Air Control Motor is tested before being shipped out for the best quality
- Walker covers a broad range of engines and vehicle models
- We have a great Customer Support Team to support you when you have questions