

FLOATS

◆ DESCRIPTION

MAINTAINS CORRECT FUEL LEVEL IN CARBURETOR BOWL BY OPENING AND CLOSING THE INLET VALVE

◆ SYMPTOMS OF FAILURE

ENGINE FLOODING, POOR FUEL ECONOMY, RICH EXHAUST & HARD HOT RESTART

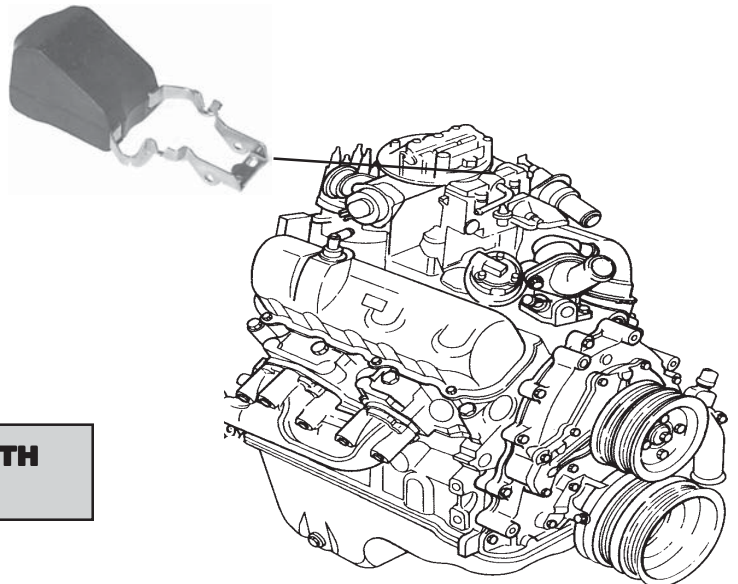
◆ RECOMMENDED SERVICE

**CHECK FOR PROPER WEIGHT USING A FLOAT SCALE (WALKER #823) ,
REPLACE WHENEVER CARBURETOR IS REPAIRED**

TYPICAL LOCATION



**CHECK FOR PROPER WEIGHT WITH
WALKER FLOAT SCALE (#823)**

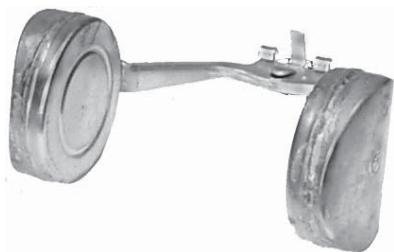


O.E.M. INTERCHANGE

O.E.M. FLOAT NO.	WALKER FLOAT NO.	O.E.M. FLOAT NO.	WALKER FLOAT NO.	O.E.M. FLOAT NO.	WALKER FLOAT NO.
FORD (CONT'D)		HITACHI		HOLLEY REPLACEMENT (CONT'D)	
D8PZ-9550-A (CM-2943)	100-89(N)	0324-23-314	100-56(B) or 100-136(N)	216-16	100-30(N)
D8PZ-9550-B (CM-3007)	100-98(N)	0324-23-315	100-58(B) or 100-138(N)	216-17	100-32(B) or 100-15(N)
D8RZ-9550-A (CM-2676)	100-61(B) or 100-99(N)	16061-10W00	100-57(B) or 100-137(N)	216-18	100-50(B) or 100-16(N)
D9AE-9550-BB	100-80(N)	16061-11M02	100-130(N)	216-19	100-89(N)
D9AZ-9550-B (CM-3120)	100-80(N)	16061-18010	100-58(B) or 100-138(N)	216-20	100-77(N)
D9PZ-9550-A (CM-3125)	100-49(B) or 100-100(N)	16061-23010	100-57(B) or 100-137(N)	216-21	100-42(B) or 100-21(N)
D9PZ-9550-B (CM-3155)	100-84(B) or 100-91(N)	16061-25610	100-108(N)	216-22	100-48(B) or 100-13(N)
D9ZZ-9550-A	100-77(N)	16061-33M12	100-133(N)	216-23	100-49(B) or 100-100(N)
D9ZZ-9550-D (CM-3098)	100-77(N)	16061-E4310	100-108(N)	216-24	100-24(N)
D97Z-9550-A (CM-3262)	100-64(N)	16061-H6200	100-58(B) or 100-138(N)	216-25	100-19(N)
EOPZ-9550-B	100-93(B)	16061-N3311	100-112(N)	216-26	100-77(N)
EOVE-9550-AA	100-77(N)	16061-N3325	100-113(N)	216-27	100-61(B) or 100-99(N)
EOVE-9550-BA	100-77(N)	HOLLEY OEM			
EOVZ-9550-A (CM-2455A)	100-77(N)	16R-16A	100-95(N)	216-29	100-39(B)
E1PZ-9550-A (CM-3588)	100-61(B) or 100-99(N)	16R-178A	100-39(B)	216-35	100-33(N)
E4PJ-9550-AA (CM-4379)	100-39(B)	16R-260-4A	100-33(N)	216-36	100-11(N)
E4PJ-9550-BA (CM-4380)	100-28(B) or 100-9(N)	16R-260-5A	100-87(N)	216-37	100-39(B)
E4PJ-9550-CA (CM-4381)	100-40(B)	16R-266A	100-33(N)	216-38	100-14(N)
E4PJ-9550-DA (CM-4382)	100-41(B)	16R-346-3A	100-11(N)	216-40	100-102(B)
E4PJ-9550-EA (CM-4383)	100-42(B) or 100-21(N)	16R-346-4A	100-54(B) or 100-104(N)	216-41	100-103(B)
E4PJ-9550-FA (CM-4384)	100-50(B) or 100-16(N)	16R-347A	100-39(B)	216-42	100-92(B)
E4PJ-9550-GA (CM-4385)	100-48(B) or 100-13(N)	16R-362A	100-14(N)	216-43	100-96(N)
E4PJ-9550-HA (CM-4386)	100-49(B) or 100-100(N)	16R-362-3A	100-86(N)	216-44	100-101(B)
E4PZ-9550-A (CM-4232)	100-97(N)	16R-420A	100-102(B)	216-46	100-98(N)
E4PZ-9550-B (CM-4309)	100-89(N)	16R-451A	100-79(N)	216-47	100-94(B)
E5PJ-9550-AA (CM-4493)	100-31(B)	16R-463A	100-103(B)	216-48	100-55(B)
E5PJ-9550-BA (CM-4495)	100-56(B)	16R-464A	100-92(B)	216-50	100-93(B)
E5PJ-9550-CA (CM-4500)	100-61(B) or 100-99(N)	16R-469-4A	100-48(B) or 100-13(N)	216-51	100-55(B)
E6PZ-9550-A (CM-4416)	100-61(B) or 100-99(N)	16R-469-5A	100-48(B) or 100-13(N)	216-54	100-31(B)
E7PZ-9550-A (CM-4572)	100-62(N)	16R-472A	100-28(B) or 100-9(N)	216-55	100-1(B)
GM (SEE ROCHESTER)		16R-479A	100-131(B)	216-56	100-38(B) or 100-10(N)
		16R-498-3A	100-96(N)	216-57	100-85(B) or 100-44(N)
		16R-506A	100-101(B)	216-58	100-83(N)
		16R-510A	100-88(N)	216-59	100-80(N)
		16R-516A	100-95(N)	216-61	100-40(B)
		16R-526A	100-97(N)	216-62	100-41(B)
		16R-527-A5	100-97(N)	216-63	100-84(B) or 100-91(N)
		16R-529A	100-61(B) or 100-99(N)	216-64	100-131(B)
		16R-572-4A	100-98(N)	216-65	100-83(N)
		16R-573A	100-84(B) or 100-91(N)	216-66	100-37(B) or 100-127(N)
		16R-577A	100-49(B) or 100-100(N)	216-67	100-97(N)
		16R-580A	100-28(B) or 100-9(N)	216-69	100-106(N)
		16R-582A	100-84(B) or 100-91(N)	216-70	100-107(N)
		16R-584A	100-61(B) or 100-99(N)	216-71	100-62(N)
		16R-587A	100-149(PL)	216-72	100-108(N)
		HOLLEY REPLACEMENT			
		216-1	100-36(B) or 100-6(N)	216-73	100-109(N)
		216-2	100-43(B) or 100-10(N)	216-74	100-110(N)
		216-3	100-27(B) or 100-7(N)	216-75	100-65(N)
		216-4	100-51(B) or 100-8(N)	216-76	100-66(N)
		216-5	100-35(B) or 100-17(N)	216-77	100-112(N)
		216-6	100-51(B) or 100-8(N)	216-78	100-115(N)
		216-7	100-46(N)	216-79	100-114(N)
		216-8	100-85(B) or 100-44(N)	216-80	100-115(N)
		216-9	100-33(N)	216-81	100-67(N)
		216-10	100-87(N)	216-82	100-116(N)
		216-11	100-54(B) or 100-104(N)	216-83	100-117(N)
		216-12	100-28(B) or 100-9(N)	216-84	100-118(N)
		216-13	100-86(N)	216-85	100-119(N)
		216-14	100-79(N)	216-86	100-120(N)
		216-15	100-88(N)	216-87	100-73(N)
				216-88	100-74(N)
				216-89	100-57(B) or 100-137(N)
				216-90	100-56(B) or 100-136(N)

100-1

ROCHESTER B, BC, BV
BRASS REPLACEMENT FOR
ROCHESTER 7002672



BUICK	1964-65
CHECKER MOTORS	1964-66
CHEVROLET	1932-67
CHEVROLET/GMC TRUCK	1932-67
JEEP	1966
OLDSMOBILE	1964-67
PONTIAC	1955-68
STUDEBAKER	1965-66

100-8

ROCHESTER 1ME
REPLACEMENT FOR
ROCHESTER 7037022, 17067965
9.5 GRAMS



BUICK	1968-75
CHECKER MOTORS	1968-79
CHEVROLET	1968-79
CHEVROLET/GMC TRUCK	1969-84
OLDSMOBILE	1968-76
PONTIAC	1968-79

FOR BRASS, USE 100-51

100-11

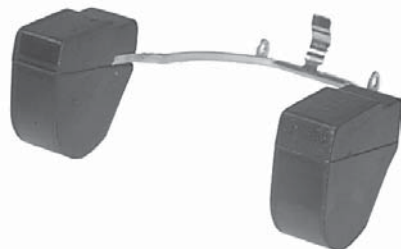
REPLACEMENT FOR
HOLLEY 16R-346-3A
CHRYSLER 4186231
13.2 GRAMS



AMC	1963-65
DODGE TRUCK	1971-79
FORD, MERCURY	1962-69

100-13

HOLLEY 1940, 1945, 1946
REPLACEMENT FOR
HOLLEY 16R-469-4A, 16R-469-5A
CHRYSLER 4049223, 4240042
FORD D0PZ-9550-A
MOTORCRAFT CM-1151
12.0 GRAMS

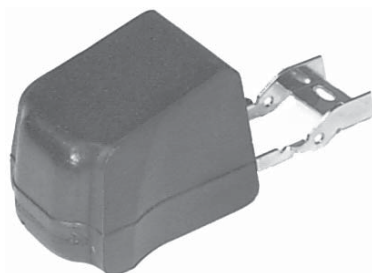


AMC	1970-76
BUICK	1968-75
CHECKER MOTORS	1976
CHEVROLET	1968-76
CHEVROLET/GMC TRUCK	1970-72
CHRYSLER	1975-83
DODGE	1974-83
DODGE TRUCK	1974-87
FORD, MERCURY	1962-83
FORD TRUCK	1963-77
INTERNATIONAL	1973-80
JEEP	1970-74
OLDSMOBILE	1968-76
PLYMOUTH	1974-83
PONTIAC	1968-76

FOR BRASS, USE 100-48

100-6

ROCHESTER QUADRAJET
REPLACEMENT FOR
ROCHESTER 7033752
CARTER 21-323
8.0 GRAMS

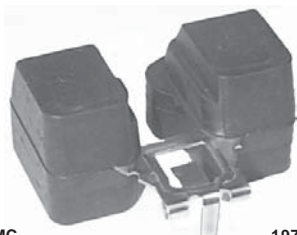


BUICK	1966-76
CADILLAC	1967-74
CHEVROLET	1967-68
CHEVROLET/GMC TRUCK	1968-76
OLDSMOBILE	1966-76
PONTIAC	1966-76

FOR BRASS, USE 100-36

100-9

HOLLEY 5200, 5210, 5220, 6500, 6510, 6520
REPLACEMENT FOR
HOLLEY 16R-472A, 16R-580A
AMC 8128530
CHRYSLER 4131117, 4186293, 4240081
FORD D1FZ-9550-A, D3RY-9550-A
GM 335106, 14009787
10.0 GRAMS

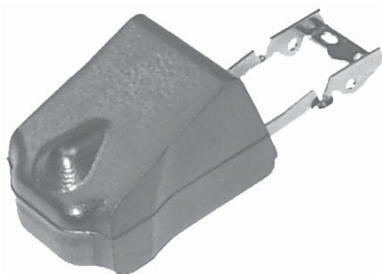


AMC	1977-79
CHEVROLET	1973-82
CHRYSLER	1982-84
CORTINA	1969-70
DODGE	1981-87
DODGE TRUCK	1982-84
FORD, MERCURY	1971-82
OLDSMOBILE	1976-78
PLYMOUTH	1981-87
PLYMOUTH TRUCK	1983
PONTIAC	1975-82
RENAULT	1972-85

FOR BRASS, USE 100-28

100-7

ROCHESTER QUADRAJET 4MC, 4MV, M4M
REPLACEMENT FOR
ROCHESTER 7037316, 7037705
FORD D00Z-9550-A
7.0 GRAMS



BUICK	1968-74
CHECKER MOTORS	1969-77
CHEVROLET	1969-74
CHEVROLET/GMC TRUCK	1968-79
PONTIAC	1968-74

FOR BRASS, USE 100-27

100-10

ROCHESTER 2GC, 2GE, 2GV
REPLACEMENT FOR
ROCHESTER 7037512
9.0 GRAMS



BUICK	1970-78
CHECKER MOTORS	1969-78
CHEVROLET	1969-78
CHEVROLET/GMC TRUCK	1969-90
OLDSMOBILE	1969-78
PONTIAC	1970-78

FOR BRASS, USE 100-43

100-14

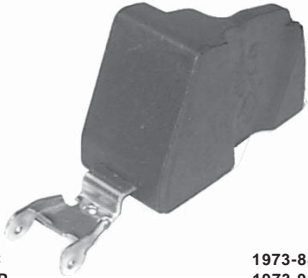
HOLLEY 1920
REPLACEMENT FOR
HOLLEY 16R-362A
12.5 GRAMS



CHEVROLET	1965-68
DODGE	1964-73
DODGE TRUCK	1965-73
INTERNATIONAL	1968-72
JEEP	1964-65
PLYMOUTH	1964-73

100-15

CARTER YF/YFA
REPLACEMENT FOR
CARTER 21-251, 21-8500
AMC 89 83 500 454
6.3 GRAMS



AMC 1973-88
JEEP 1973-92

FOR BRASS, USE 100-32

100-19

FORD 4350
REPLACEMENT FOR
FORD D5VZ-9550-A
MOTORCRAFT CM-2145
AMC 8126023
14.5 GRAMS



AMC 1975-76
FORD/MERCURY 1975-78
FORD TRUCK 1975-78
JEEP 1975-78
LINCOLN 1975-78

100-27

ROCHESTER QUADRAJET 4MC, 4MV, M4M
BRASS REPLACEMENT FOR
ROCHESTER 7037316, 7037705
FORD D00Z-9550-A



BUICK 1968-74
CHECKER MOTORS 1969-77
CHEVROLET 1969-74
CHEVROLET/GMC TRUCK 1968-79
PONTIAC 1968-74

FOR NITROPHYL, USE 100-7

100-16

CARTER THERMOQUAD
REPLACEMENT FOR
CARTER 21-249, 21-252
CHRYSLER 3780155
FORD D4AZ-9550-B
MOTORCRAFT CM-2028
8.0 GRAMS

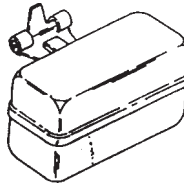


CHRYSLER 1972-84
DODGE 1972-84
DODGE TRUCK 1973-84
FORD/MERCURY 1974
FORD TRUCK 1976-83
INTERNATIONAL 1974-80
LINCOLN 1974
PLYMOUTH 1972-84

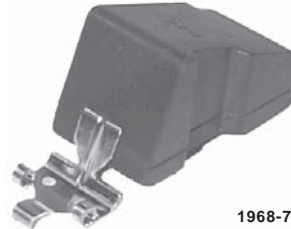
FOR BRASS, USE 100-50

100-20

FORD 1 BBL.
BRASS REPLACEMENT FOR
FORD 1100, C3AZ-9550-A
MOTORCRAFT CM-430



FORD 2100, 2150
REPLACEMENT FOR
FORD DOAZ-9550-A, D4AZ-9550-A
MOTORCRAFT CM-1062, CM-1062A
AMC 4488178
9.5 GRAMS



AMC 1968-79
EDSEL 1959-60
FORD/MERCURY 1958-86
FORD TRUCK 1963-86
JEEP 1971-92
LINCOLN 1977-82

FOR BRASS, USE 100-42

100-28

HOLLEY 5200, 5210, 5220
BRASS REPLACEMENT FOR
HOLLEY 16R-472A, 16R-580A
AMC 8128530
CHRYSLER 4131117, 4240081
FORD D1FZ-9550-A, D3RY-9550-A
GM 335106, 14009787

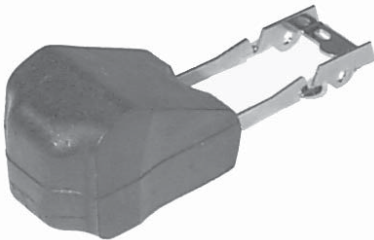


AMC 1977-79
CHEVROLET 1973-82
CHRYSLER 1982-84
CORTINA 1969-70
DODGE 1981-87
DODGE TRUCK 1982-84
FORD/MERCURY 1971-82
OLDSMOBILE 1976-78
PLYMOUTH 1981-87
PLYMOUTH TRUCK 1983
PONTIAC 1975-82
RENAULT 1972-85

FOR NITROPHYL, USE 100-9

100-17

ROCHESTER DUALJET, QUADRAJET
2MV, 2MC, 4M, 4MC, 4MV, M4M
REPLACEMENT FOR
ROCHESTER 7041468, 7043379, 7044332,
7046300, 17067153, 17067273,
17067275, 17078725, 17079405
CARTER 21-321
CHRYSLER 4342842
6.5 GRAMS



BUICK 1975-87
CADILLAC 1975-80
CHECKER MOTORS 1977-80
CHEVROLET 1975-87
CHEVROLET/GMC TRUCK 1975-89
CHRYSLER 1985-87
DODGE 1985-87
DODGE TRUCK 1985-88
OLDSMOBILE 1975-87
PLYMOUTH 1985-87
PONTIAC 1975-87

FOR BRASS, USE 100-35

100-24

FORD 4300
REPLACEMENT FOR
FORD C7AZ-9550-A
MOTORCRAFT CM-1468
AMC 4488099
15.0 GRAMS



AMC 1970-74
FORD/MERCURY 1966-76
FORD TRUCK 1973-74
JEEP 1973-74
LINCOLN 1968-74

100-30

CARTER RBS
REPLACEMENT FOR
CARTER 21-217, 21-250
FORD D0ZZ-9550-A
7.5 GRAMS



AMC 1963-69
FORD/MERCURY 1970-74
FORD TRUCK 1971
JEEP 1966-71

100-31

CARTER YFA
BRASS REPLACEMENT FOR
CARTER 21-258, 21-8502
FORD E5PZ-9550-A



FORD/MERCURY 1975-80
FORD TRUCK 1968-86

100-35

ROCHESTER DUALJET/QUADRAJET M2M, M4M
BRASS REPLACEMENT FOR
ROCHESTER 7041468, 7043379, 7044332, 7046300,
17067153, 17067273, 17067275, 17078725,
17079405
CARTER 21-321
CHRYSLER 4342842



BUICK 1975-87
CADILLAC 1975-80
CHECKER MOTORS 1977-80
CHEVROLET 1975-87
CHEVROLET/GMC TRUCK 1975-89
CHRYSLER 1985-87
DODGE TRUCK 1985-88
OLDSMOBILE 1975-87
PLYMOUTH 1985-87
PONTIAC 1975-87
FOR NITROPHYL, USE 100-17

100-38

ROCHESTER 2GV
BRASS REPLACEMENT FOR
ROCHESTER 7037519



CHEVROLET 1958-72
CHEVROLET/GMC TRUCK 1958-72
JEEP 1966-71
PONTIAC 1971-72
FOR NITROPHYL, USE 100-10

100-32

CARTER YF
BRASS REPLACEMENT FOR
CARTER 21-251
AMC 8123050



AMC 1973-79
AMERICAN GENERAL 1971-79
JEEP 1971-79
FOR NITROPHYL, USE 100-15

100-39

HOLLEY 1904, 1908
BRASS REPLACEMENT FOR
HOLLEY 16R-178A, 16R-347A



AMC 1959-60
CHEVROLET/GMC TRUCK 1960-65
EDEL 1959-60
FORD/MERCURY 1952-67
FORD TRUCK 1952-67
INTERNATIONAL 1960-68

100-36

ROCHESTER QUADRAJET 4M, 4MC, 4MV, M4M
BRASS REPLACEMENT FOR
ROCHESTER 7029854, 7033752, 7034399,
7034454, 7046301



BUICK 1966-76
CADILLAC 1967-74
CHECKER MOTORS 1967-68
CHEVROLET 1965-68
CHEVROLET/GMC TRUCK 1968-76
OLDSMOBILE 1966-77
PONTIAC 1965-76
FOR NITROPHYL, USE 100-6

100-40

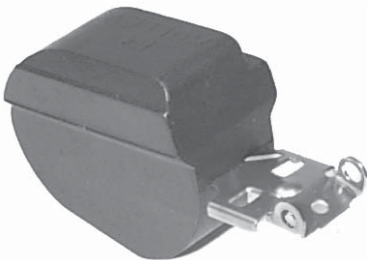
FORD 2100, 4100 (PRIMARY)
BRASS REPLACEMENT FOR
FORD C1AZ-9550-A, C5AF-9550-B
MOTORCRAFT CM-615



EDEL 1958-60
FORD/MERCURY 1958-74
FORD TRUCK 1963-75

100-33

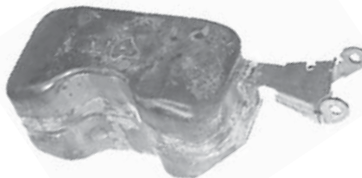
HOLLEY 2300, 4150
REPLACEMENT FOR
HOLLEY 16R-260-4A, 16R-260-5A, 216-10
FORD C1AE-9550-C
15.5 GRAMS



AMC 1958-66
CHEVROLET/GMC TRUCK 1967-74
DODGE TRUCK 1969-75
EDEL 1959-60
FORD/MERCURY 1957-71
FORD TRUCK 1959-87
INTERNATIONAL 1964-80
JEEP 1965-67
LINCOLN 1958-61
WHITE/DIAMOND REO TRUCK 1970-71

100-37

ROCHESTER 2GC
BRASS REPLACEMENT FOR
ROCHESTER 7000273, 7012974,
7032887, 7035592



BUICK 1961-74
CADILLAC 1958-60
CHECKER MOTORS 1963-68
CHEVROLET 1955-69
CHEVROLET/GMC TRUCK 1955-69
DIVCO TRUCK N/A
DODGE 1971
DODGE TRUCK 1971
JEEP 1970-71
OLDSMOBILE 1955-73
PLYMOUTH 1971
PONTIAC 1955-72
STUDEBAKER 1965
WHITE/DIAMOND REO TRUCK 1967
FOR NITROPHYL, USE 100-127

100-41

FORD 4100 (SECONDARY)
BRASS REPLACEMENT FOR
FORD C1AZ-9550-B, C5AF-9550-D,
C6AZ-9550-C
MOTORCRAFT CM-672



EDEL 1958-60
FORD/MERCURY 1958-69

100-42

FORD 2100, 2150
BRASS REPLACEMENT FOR
FORD D0AZ-9550-A, D4AZ-9550-A
MOTORCRAFT CM-1062
AMC 4488178



AMC	1968-79
EDSEL	1959-60
FORD/MERCURY	1958-86
FORD TRUCK	1963-86
JEEP	1971-92
LINCOLN	1977-82

FOR NITROPHYL, USE 100-21

100-46

ROCHESTER 2SE, E2SE
REPLACEMENT FOR
ROCHESTER 17056073, 17067426, 17067591,
17068130, 17078155, 17079943
AMC 8132729, 8133482, 8135507
8.0 GRAMS



AMC	1980-83
BUICK	1980-86
CHEVROLET	1979-86
CHEVROLET/GMC TRUCK	1979-85
JEEP	1980-83
OLDSMOBILE	1979-86
PONTIAC	1979-86

100-49

HOLLEY 1946
BRASS REPLACEMENT FOR
HOLLEY 16R-577A
FORD D9PZ-9550-A
MOTORCRAFT CM-3125



FORD/MERCURY 1978-81
FOR NITROPHYL, USE 100-100

100-43

ROCHESTER 2GC, 2GE, 2GV
BRASS REPLACEMENT FOR
ROCHESTER 7037512



BUICK	1970-78
CHECKER MOTORS	1969-78
CHEVROLET	1969-78
CHEVROLET/GMC TRUCK	1969-90
OLDSMOBILE	1969-78
PONTIAC	1970-78

FOR NITROPHYL, USE 100-10

100-47

ROCHESTER MV
REPLACEMENT FOR
ROCHESTER 17051624,
CARTER 21-314
9.5 GRAMS



CHEVROLET	1976-78
PONTIAC	1976-77

FOR BRASS, USE 100-51

100-50

CARTER THERMOQUAD
BRASS REPLACEMENT FOR
CARTER 21-249, 21-252
CHRYSLER 3780155
FORD D4AZ-9550-B
MOTORCRAFT CM-2028

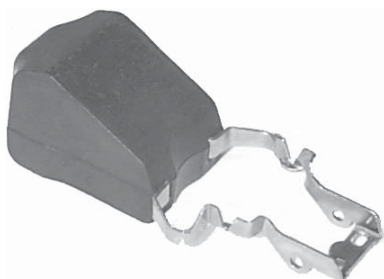


CHRYSLER	1973-84
DODGE	1972-84
DODGE TRUCK	1973-84
FORD/MERCURY	1974
FORD TRUCK	1976-83
INTERNATIONAL	1974-80
LINCOLN	1974
PLYMOUTH	1972-84

FOR NITROPHYL, USE 100-16

100-44

ROCHESTER E2ME, E4ME
REPLACEMENT FOR
ROCHESTER 17057078, 17067357,
17067445, 17067504, 17068327,
17068806, 17111076, 17111103
7.0 GRAMS

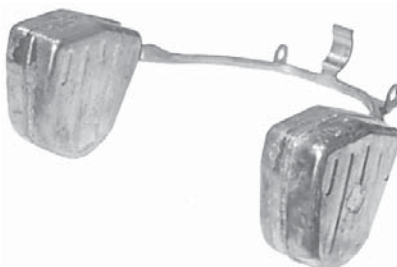


BUICK	1979-90
CADILLAC	1980-90
CHECKER MOTORS	1980-82
CHEVROLET	1979-90
CHEVROLET/GMC TRUCK	1983-87
CHRYSLER	1985-89
DODGE	1985-89
OLDSMOBILE	1979-90
PLYMOUTH	1985-89
PONTIAC	1979-90

FOR BRASS, USE 100-85

100-48

HOLLEY 1940, 1945, 1946
BRASS REPLACEMENT FOR
HOLLEY 16R-469-4A, 16R-469-5A
CHRYSLER 4049223, 4240042
FORD D0PZ-9550-A
MOTORCRAFT CM-1151



AMC	1970-76
BUICK	1968-75
CHECKER MOTORS	1976
CHEVROLET	1968-76
CHEVROLET/GMC TRUCK	1970-72
CHRYSLER	1975-83
DODGE	1974-83
DODGE TRUCK	1974-87
FORD/MERCURY	1962-83
FORD TRUCK	1963-77
INTERNATIONAL	1973-80
JEEP	1970-74
OLDSMOBILE	1968-75
PLYMOUTH	1974-83
PONTIAC	1968-76

FOR NITROPHYL, USE 100-13

100-51

ROCHESTER 1ME, 1MV
BRASS REPLACEMENT FOR
ROCHESTER 7037022, 17051624, 17067965

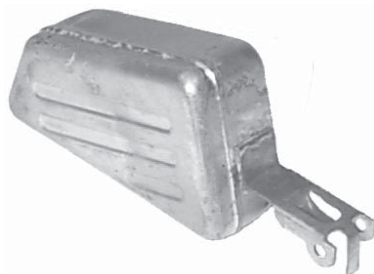


BUICK	1968-76
CHECKER MOTORS	1968-79
CHEVROLET	1968-79
CHEVROLET/GMC TRUCK	1968-90
OLDSMOBILE	1968-76
PONTIAC	1968-78

FOR NITROPHYL, USE 100-8 OR 100-47

100-54

HOLLEY 2210, 2211C, 2245
BRASS REPLACEMENT FOR
HOLLEY 16R-346-4A
AMC 3206835
CHRYSLER 3514707



AMC	1965-67
BUICK	1970-74
CHEVROLET	1967-74
CHEVROLET/GMC TRUCK	1974
CHRYSLER	1963-80
DODGE	1963-80
DODGE TRUCK	1971-83
INTERNATIONAL	1963-81
JEEP	1965-67
PLYMOUTH	1963-80
PONTIAC	1967-72

FOR NITROPHYL, USE 100-104

100-57

HITACHI
BRASS REPLACEMENT FOR
CHEVROLET 94208670, 94215712, 94401362
NISSAN 16061-10W00, 16061-23010

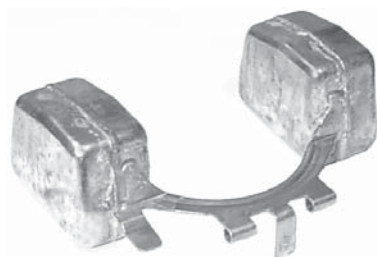


CHEVROLET/GMC TRUCK	1982-85
CHEVROLET LUV TRUCK	1972-82
ISUZU	1981-90
NISSAN	1968-86

FOR NITROPHYL, USE 100-137

100-61

WEBER 740 32-DFTA
BRASS REPLACEMENT FOR
HOLLEY 16R-529A, 16R-584A
FIAT 9923226
FORD D8RZ-9550-A, E1PZ-9550-A,
E6PZ-9550-A



FIAT	1966-80
FORD/MERCURY	1981-86
FORD FIESTA	1978-80
LANCIA	1976-77
YUGO	1986-89

FOR NITROPHYL, USE 100-99

100-55

CARTER BBD
BRASS REPLACEMENT FOR
AMC 8127325
CARTER 21-235
CHRYSLER 3481274



AMC	1976-88
CHRYSLER	1959-84
DESOTO	1960
DODGE	1960-84
DODGE TRUCK	1963-84
JEEP	1977-90
PLYMOUTH	1960-84

100-58

HITACHI
BRASS REPLACEMENT FOR
HONDA 16013-634-003
MAZDA 0324-23-315, D514-23-317, E563-23-315
NISSAN 16061-H6200, 16061-18010
SUBARU 49480-7451, 89435-6101



HONDA	1973-76
MAZDA	1976-85
NISSAN	1970-84
SUBARU	1970-92

FOR NITROPHYL, USE 100-138

100-62

AISAN
REPLACEMENT FOR
FORD E7PZ-9550-A
MOTORCRAFT CM-4572
TOYOTA 21209-37041
10.5 GRAMS



FORD TRUCK	1987-88
TOYOTA	1981-90

100-59

AISAN
BRASS REPLACEMENT FOR
TOYOTA 21209-22010, 21209-24010,
21209-33010, 21209-33011, 21209-38010



TOYOTA	1965-87
--------	---------

FOR NITROPHYL, USE 100-139

100-63

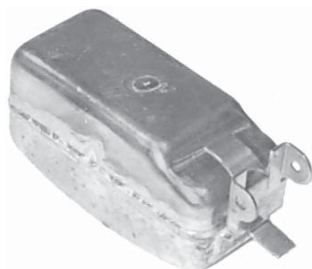
NIKKI
REPLACEMENT FOR
MAZDA HE01-23-451, 8130-23-451
9.2 GRAMS



MAZDA	1979-82
-------	---------

100-56

HITACHI
BRASS REPLACEMENT FOR
CHEVROLET 94020985
FORD D27Z-9550-A
MAZDA 0381-23-314



CHEVROLET LUV TRUCK	1972-80
FORD COURIER TRUCK	1972-82
MAZDA	1972-80

FOR NITROPHYL, USE 100-136

100-60

AISAN
BRASS REPLACEMENT FOR
TOYOTA 21209-24480, 21209-27040



TOYOTA	1973-81
--------	---------

FOR NITROPHYL, USE 100-140

100-64

NIKKI
REPLACEMENT FOR
MAZDA 3975-23-451
FORD D97Z-9550-A
6.9 GRAMS



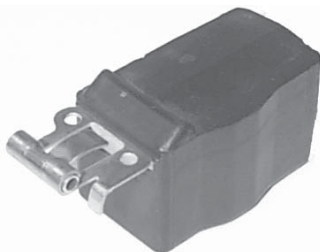
FORD COURIER TRUCK	1979-82
MAZDA	1979-84

100-65
AISAN
REPLACEMENT FOR
TOYOTA 21209-45200
9.7 GRAMS



TOYOTA 1978-79

100-69
KEIHIN
REPLACEMENT FOR
HONDA 16013-657-670, 16013-657-671
11.0 GRAMS



HONDA 1975-79

100-73
MIKUNI/SOLEX
REPLACEMENT FOR
CHRYSLER MD600118
5.6 GRAMS



ARROW 1976-77
COLT (DODGE/PLYMOUTH) 1971-77

100-66
AISAN
REPLACEMENT FOR
TOYOTA 21209-61020
9.7 GRAMS



TOYOTA 1975-80

100-70
KEIHIN
REPLACEMENT FOR
HONDA 16013-657-005, 16013-657-015
10.0 GRAMS



HONDA 1979
LARGE FLOAT

100-74
MIKUNI/SOLEX
REPLACEMENT FOR
CHRYSLER MDO21254, MD606233
5.6 GRAMS



ARROW 1978-79
COLT (DODGE/PLYMOUTH) 1978-79
CHALLENGER (DODGE) 1978-79
CHAMP (PLYMOUTH) 1979
SAPPORO (PLYMOUTH) 1978-79

100-67
NIKKI
REPLACEMENT FOR
MAZDA 0305-23-316
7.6 GRAMS



MAZDA 1972-74

100-71
KEIHIN
PLASTIC REPLACEMENT FOR
HONDA 16013-PA0-005, 16013-PA0-015 (PRI)



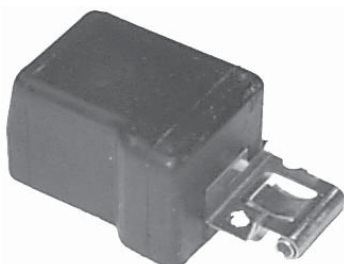
HONDA ACCORD 1980-84
HONDA CIVIC 1980-83
HONDA PRELUDE 1980-82
FOR BRASS, USE 100-81

100-77
FORD VV
REPLACEMENT FOR
FORD D7ZZ-9550-A, D9ZZ-9550-A, D,
E0VZ-9550-A, B
MOTORCRAFT CM-3098 (REPLACES CM-2455)
CARTER 21-318
10.0 GRAMS



FORD/MERCURY 1977-91
FORD TRUCK 1981-83
LINCOLN 1977-82

100-68
KEIHIN
REPLACEMENT FOR
HONDA 16049-657-670, 16049-657-671
7.7 GRAMS



HONDA 1975-79

100-72
KEIHIN
PLASTIC REPLACEMENT FOR HONDA
16049-PA0-005, 16049-PA0-015 (SEC)



HONDA ACCORD 1980-84
HONDA CIVIC 1980-83
HONDA PRELUDE 1980-82
FOR BRASS, USE 100-82

100-79
HOLLEY 2300, 4150
REPLACEMENT FOR
HOLLEY 16R-451A
11.0 GRAMS



CHEVROLET 1967-69
CHRYSLER 1970
DODGE 1969-72
PLYMOUTH 1970-72

100-80

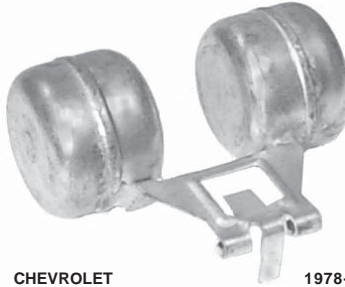
FORD 2150
REPLACEMENT FOR
FORD D9AZ-9550-B
MOTORCRAFT CM-3120
8.5 GRAMS



FORD/MERCURY 1975-83
FORD TRUCK 1979-85
LINCOLN 1978-83

100-84

HOLLEY 6500, 6520
BRASS REPLACEMENT FOR
HOLLEY 16R-573A, 16R-582A
GM 14022256, 14069849



CHEVROLET 1978-87
CHRYSLER 1982-84
DODGE 1978-88
DODGE TRUCK 1982-88
FORD/MERCURY 1977-82
OLDSMOBILE 1978
PLYMOUTH 1978-88
PONTIAC 1977-87
FOR NITROPHYL, USE 100-91

100-87

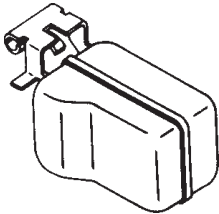
HOLLEY 2300, 4150, 4160 PRIMARY
REPLACEMENT FOR
HOLLEY 16R-260-5A, 216-10
16.5 GRAMS



DODGE TRUCK 1968-79
INTERNATIONAL 1964-81

100-81

KEIHIN
BRASS REPLACEMENT FOR
HONDA 16013-PAO-005, 16013-PAO-015
(PRIMARY)



HONDA 1980-87
FOR PLASTIC, USE 100-71

100-85

ROCHESTER E2ME, E4ME
BRASS REPLACEMENT FOR
ROCHESTER 17057078, 17067357,
17067445, 17067504, 17068327,
17068806, 17111076, 17111103



BUICK 1979-90
CADILLAC 1980-90
CHECKER MOTORS 1980-82
CHEVROLET 1979-90
CHEVROLET/GMC TRUCK 1983-87
DODGE 1985-89
OLDSMOBILE 1979-90
PLYMOUTH 1985-89
PONTIAC 1979-90
FOR NITROPHYL, USE 100-44

100-88

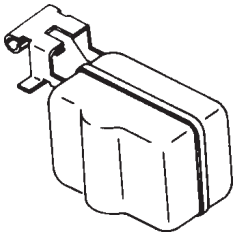
HOLLEY 2280
REPLACEMENT FOR
HOLLEY 16R-510A
CHRYSLER 4186230
14.5 GRAMS



CHRYSLER 1975-87
DODGE 1962-87
DODGE TRUCK 1966-87
PLYMOUTH 1962-87

100-82

KEIHIN
BRASS REPLACEMENT FOR
HONDA 16049-PAO-005, 16049-PAO-015
(SECONDARY)



HONDA 1980-87
FOR PLASTIC, USE 100-72

100-89

CARTER YF, YFA
REPLACEMENT FOR
CARTER 21-264, 21-8501
FORD D5VZ-9550-A, D8PZ-9550-A,
E4PZ-9550-B
7.1 GRAMS



AMC 1975-76
JEEP 1975-76
FORD/MERCURY 1978-86
FORD TRUCK 1978-86

100-83

ROCHESTER 2SE, E2SE
REPLACEMENT FOR
ROCHESTER 17068043, 17068551,
17071052, 17078181, 17079513,
17079968, 17110227, 17110257
7.0 GRAMS



BUICK 1980-84
CADILLAC 1982-84
CHEVROLET 1979-86
CHEVROLET/GMC TRUCK 1982-85
JEEP 1984-86
OLDSMOBILE 1979-84
PONTIAC 1979-86

100-86

HOLLEY 1920
REPLACEMENT FOR
HOLLEY 16R-362-3A
7.5 GRAMS



AMC 1964-65
CHRYSLER INDUSTRIAL N/A
DODGE 1960-73
DODGE TRUCK 1965-73
INTERNATIONAL 1970-73
PLYMOUTH 1960-73

100-91

HOLLEY MODELS 6500-6520
REPLACEMENT FOR
HOLLEY 16R-573A, 16R-582A
GM 14009787, 14022256, 14069849
7.9 GRAMS



CHEVROLET 1978-87
CHRYSLER 1982-84
DODGE 1978-88
DODGE TRUCK 1986-88, 1982-84
FORD/MERCURY 1977-82
OLDSMOBILE 1978
PLYMOUTH 1978-88
PONTIAC 1981-87, 1977-78
FOR BRASS, USE 100-84

100-92

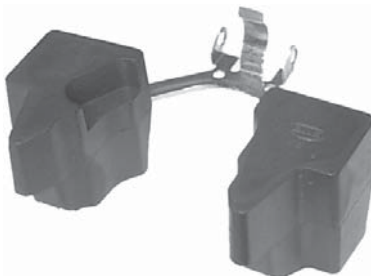
HOLLEY 2300, 4150, 4160
BRASS REPLACEMENT FOR
HOLLEY 16R-464A, 16R-479A
CARTER 216-64
CHRYSLER 3420364
FORD B9TZ-9550-A, D7PZ-9550-A



AMC	1970-74
CHEVROLET	1965
CHRYSLER	1967-70
DODGE	1967-71
DODGE TRUCK	1970-72
EDSEL	1958-60
FORD/MERCURY	1957-78
FORD TRUCK	1957-74
JEEP	1965-74
LINCOLN	1958-78
PLYMOUTH	1967-71

100-95

HOLLEY 6280
REPLACEMENT FOR
HOLLEY 16R-516A
CHRYSLER 4342857
14.0 GRAMS



CHRYSLER	1985-89
DODGE	1985-89
DODGE TRUCK	1985-87
PLYMOUTH	1985-89

100-98

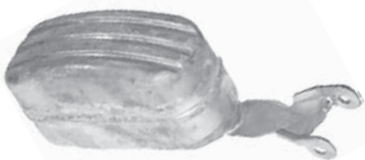
HOLLEY 4180
REPLACEMENT FOR
HOLLEY 16R-572-4A
FORD C1AE-9550-B, D8PZ-9550-B
15.0 GRAMS



FORD/MERCURY	1983-85
FORD TRUCK	1978-91

100-93

CARTER YF
BRASS REPLACEMENT FOR
CARTER 21-122, 21-223
AMC 4488047



AMC	1954-76
CHECKER MOTORS	1964-65
CHEVROLET	1932-67
CHEVROLET/GMC TRUCK	1937-67
FORD/MERCURY	1967-74
FORD TRUCK	1968-82
INTERNATIONAL	1950-53
JEEP	1950-76
KAISER/FRAZER	1951-54
NASH	1955-55
OLDSMOBILE	1966-67
OPEL (BUICK)	1968-72
PONTIAC	1964-67
STUDEBAKER	1965

100-96

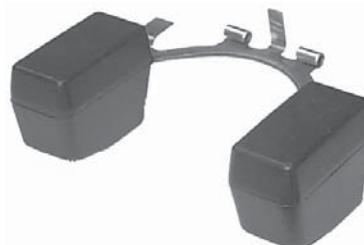
HOLLEY 4150, 4160
REPLACEMENT FOR
HOLLEY 16R-498-3A
ROCHESTER 790813
15.3 GRAMS



CHEVROLET/GMC TRUCK	1975-90
---------------------	---------

100-99

WEBER 740 32DFTA
REPLACEMENT FOR
HOLLEY 16R-529A, 16R-584A
FIAT 9923226
FORD D8RZ-9550-A, E1PZ-9550-A,
E6PZ-9550-A
13.0 GRAMS



FIAT	1966-80
FORD/MERCURY	1981-86
FORD FIESTA	1978-80
LANCIA	1976-77
YUGO	1986-89

FOR BRASS, USE 100-61

100-94

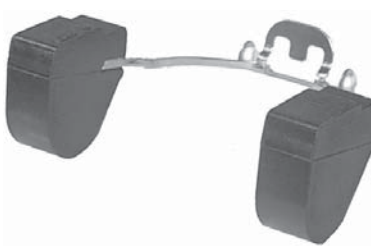
CARTER AFB, AVS
BRASS REPLACEMENT FOR
CARTER 21-179, 21-188



BUICK	1957-67
CADILLAC	1957-66
CHEVROLET	1958-66
CHRYSLER	1957-67
DESOTO	1958-61
DODGE	1958-71
PLYMOUTH	1958-71
PONTIAC	1957-67

100-97

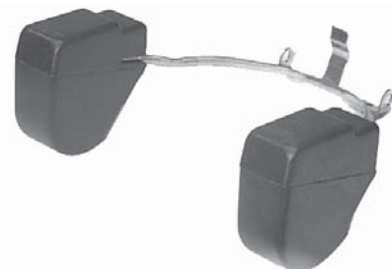
HOLLEY 1949, 6149
REPLACEMENT FOR
HOLLEY 16R-526A, 16R-527AS
FORD E4PZ-9550-A
13.0 GRAMS



FORD/MERCURY	1984-87
--------------	---------

100-100

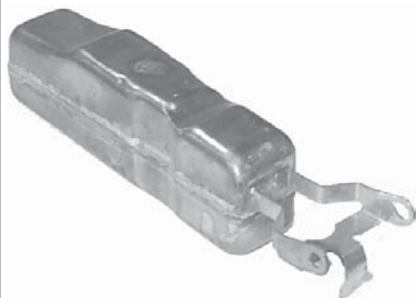
HOLLEY 1946, 1946C
REPLACEMENT FOR
HOLLEY 16R-577A
FORD D9PZ-9550-A
MOTORCRAFT CM-3125
14.5 GRAMS



FORD/MERCURY	1978-81
FOR BRASS, USE 100-49	

100-101

HOLLEY 4360
BRASS REPLACEMENT FOR
HOLLEY 16R-506A
CARTER 21-305



CHEVROLET 1965-76
CHEVROLET/GMC TRUCK 1968-76
PONTIAC 1967-76

100-104

HOLLEY 2210, 2211C, 2245
REPLACEMENT FOR
HOLLEY 16R-346-4A
AMC 3206835
CHRYSLER 3514707
10.5 GRAMS



AMC 1965-67
BUICK 1970-74
CHEVROLET 1967-74
CHEVROLET/GMC TRUCK 1974
CHRYSLER 1963-80
DODGE 1963-80
DODGE TRUCK 1971-83
INTERNATIONAL 1963-81
JEEP 1965-67
PLYMOUTH 1963-80
PONTIAC 1967-72

FOR BRASS, USE 100-54

100-109

AISAN
REPLACEMENT FOR
TOYOTA 21209-13310
GM 96053090
SUZUKI 13213-82100
8.7 GRAMS



CHEVROLET 1985-87
TOYOTA 1981-82

100-102

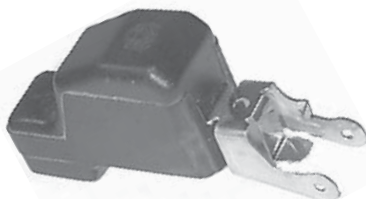
HOLLEY 2300, 4150
BRASS REPLACEMENT FOR
HOLLEY 16R-420A



CHEVROLET 1964-72
CHRYSLER 1970
DODGE 1969-72
FORD/MERCURY 1965-71
PLYMOUTH 1970-72

100-106

AISAN
REPLACEMENT FOR
TOYOTA 21209-13360
9.5 GRAMS



TOYOTA STARLET 1982

100-110

HITACHI
REPLACEMENT FOR
GM/ISUZU 94248477
10.7 GRAMS



CHEVROLET/GMC TRUCK 1982-84
ISUZU 1982-87
LUV TRUCK 1982

100-107

AISAN
REPLACEMENT FOR
TOYOTA 21209-01010, 21209-15020
GM 94840145
7.0 GRAMS



CHEVROLET 1985-88
TOYOTA 1979-89

100-111

AISAN
REPLACEMENT FOR
TOYOTA 21209-41012, 21209-41080,
21209-41130
10.0 GRAMS



TOYOTA 1967-77

100-103

BRASS REPLACEMENT FOR
HOLLEY 16R-463A



BUICK 1968-72
CHEVROLET 1964-74
CHEVROLET/GMC TRUCK 1969-74
CHRYSLER 1971-72
DODGE 1971-72
DODGE TRUCK 1971-79
FORD/MERCURY 1966
OLDSMOBILE 1966-72
PLYMOUTH 1971-72
PONTIAC 1967-73

100-108

HITACHI
REPLACEMENT FOR
NISSAN 16061-25610, 16061-E4310
9.9 GRAMS



NISSAN 240Z 1970-72
(TWO REQ. PER VEHICLE)

100-112

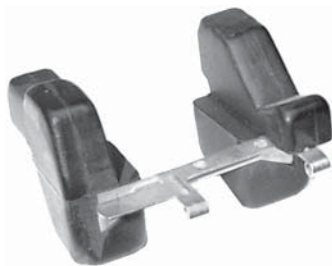
HITACHI
REPLACEMENT FOR
NISSAN 16061-N3311
13.4 GRAMS



NISSAN 240/260Z 1973-75
(TWO REQ. PER VEHICLE)

100-113

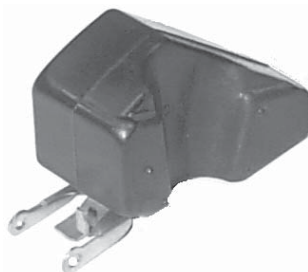
HITACHI
REPLACEMENT FOR
NISSAN 16061-N3325
12.3 GRAMS



NISSAN 2000 1967-70
(TWO REQ. PER VEHICLE)

100-117

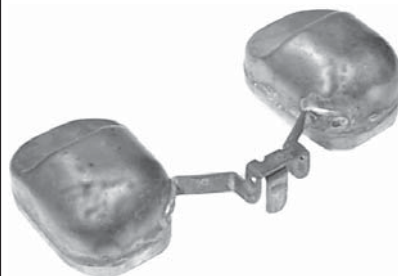
NIKKI
REPLACEMENT FOR
MAZDA N201-23-3290
10.8 GRAMS



MAZDA RX-7 (REAR FLOAT) 1981-85

100-122

CARTER BBD
BRASS REPLACEMENT FOR
CARTER 21-196



CHRYSLER 1959-71
DESOTO 1958-60
DODGE 1959-71
DODGE TRUCK 1967-71
PLYMOUTH 1963-71

100-114

MIKUNI/SOLEX
REPLACEMENT FOR
CHRYSLER MD606844, MD612213
HYUNDAI 32219-21200
5.9 GRAMS
(ORIG. FLOAT IS PLASTIC, REP. IS NITROPHYL)



ARROW (PLYMOUTH) 1981-83
CHALLENGER (DODGE) 1981-83
CHRYSLER 1982-87
COLT (DODGE/PLYMOUTH) 1981-92
DODGE 1981-92
DODGE TRUCK 1983-89
HYUNDAI 1986-89
MITSUBISHI 1983-89
PLYMOUTH 1981-87
SAPPORO (PLYMOUTH) 1981-83

100-118

NIKKI
REPLACEMENT FOR
MAZDA 8871-23-3280
11.2 GRAMS



MAZDA RX-7 (FRONT FLOAT) 1979-80

100-123

CARTER AVS
BRASS REPLACEMENT FOR
CARTER 21-241



CHRYSLER 1968-71
DODGE 1968-71
PLYMOUTH 1969-71

100-115

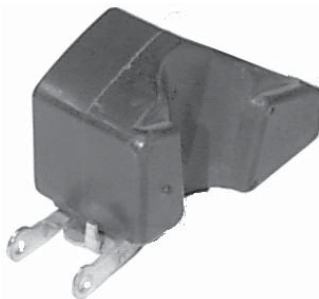
MIKUNI/SOLEX
REPLACEMENT FOR
CHRYSLER MD606786, 988
6.5 GRAMS



ARROW (PLYMOUTH) 1980
COLT (DODGE/PLYMOUTH) 1980-84
CHALLENGER (DODGE) 1980-82
CHAMP (PLYMOUTH) 1980-83
SAPPORO (PLYMOUTH) 1980-82

100-119

NIKKI
REPLACEMENT FOR
MAZDA 8871-23-3290
10.2 GRAMS



MAZDA RX-7 (REAR FLOAT) 1979-80

100-124

CARTER AVS
BRASS REPLACEMENT FOR
CARTER 21-245



CHRYSLER 1968-71
DODGE 1968-71
PLYMOUTH 1968-71

100-116

NIKKI
REPLACEMENT FOR
MAZDA N201-23-328
10.5 GRAMS



MAZDA RX-7 (FRONT FLOAT) 1981-85

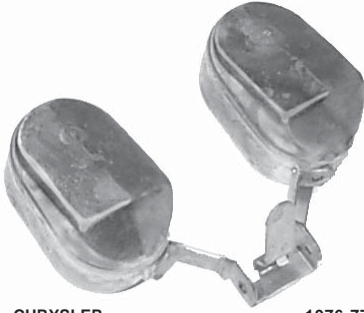
100-120

AISAN
REPLACEMENT FOR
TOYOTA 21209-33080
7.9 GRAMS



TOYOTA 1975-79

100-125
CARTER BBS
BRASS REPLACEMENT FOR
CARTER 21-222



CHRYSLER 1976-77
DESOTO 1960
DODGE 1960-71
DODGE TRUCK 1961-79
PLYMOUTH 1960-71

100-130
HITACHI
REPLACEMENT FOR
GM 96051716
NISSAN 16061-11M02
SUBARU 16060-KA010
SUZUKI 13319-82000
10.9 GRAMS



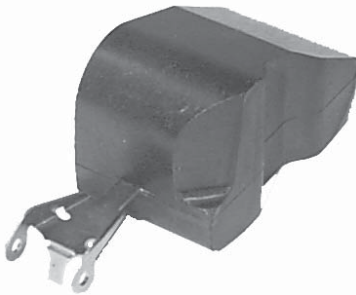
NISSAN 1983-88
(HAS TWO NOTCHES)

100-134
KEIHIN
REPLACEMENT FOR
HONDA 16049-PC6-005 (SEC)
4.1 GRAMS



HONDA 1983

100-127
ROCHESTER 2GC
REPLACEMENT FOR
ROCHESTER 7032887
CARTER 21-300
8.0 GRAMS



BUICK 1966-74
DODGE 1971
DODGE TRUCK 1971
PLYMOUTH 1971
PONTIAC 1958-72
FOR BRASS, USE 100-37

100-131
HOLLEY 4160
BRASS REPLACEMENT FOR
HOLLEY 16R-479A, 216-64
FORD D7PZ-9550-A (SEC.)



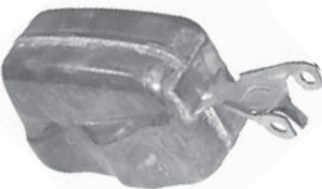
FORD/MERCURY 1972-78
LINCOLN 1978

100-135
KEIHIN
REPLACEMENT FOR
HONDA 16013-PB9-005 (PRI)
8.1 GRAMS



HONDA 1983-90

100-132
CARTER WGD, WCFB
BRASS REPLACEMENT FOR
CARTER 21-172



AMC 1957
BUICK 1955-67
CHEVROLET 1955-67
CHEVROLET/GMC TRUCK 1955-67
FORD/MERCURY 1934-56
OLDSMOBILE 1961-66
PONTIAC 1958-72

100-136
HITACHI
REPLACEMENT FOR
CHEVROLET 94020985
FORD D27Z-9550-A
MAZDA 0381-23-314



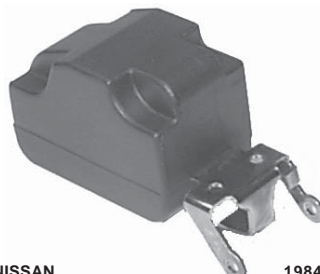
CHEVROLET LUV TRUCK 1972-80
FORD COURIER TRUCK 1972-82
MAZDA 1972-80
FOR BRASS, USE 100-56

100-128
ROCHESTER QUADRAJET
REPLACEMENT FOR
ROCHESTER 7034399, 7034454
CARTER 21-295
9.5 GRAMS



BUICK 1966-74
CHECKER MOTORS 1967-68
CHEVROLET 1967-68
CHEVROLET/GMC TRUCK 1968
PONTIAC 1966-69
FOR BRASS, USE 100-36

100-133
HITACHI
REPLACEMENT FOR
NISSAN 16061-33M12
SUBARU 16060-AA000
10.8 GRAMS



NISSAN 1984-88
(HAS FOUR NOTCHES)

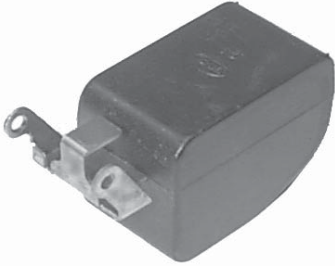
100-137
HITACHI
REPLACEMENT FOR
NISSAN 16061-10W00, 23010
GM 94208670, 94215712, 94401362
10.8 GRAMS



CHEVROLET/GMC TRUCK 1982-85
CHEVROLET LUV TRUCK 1972-82
ISUZU 1981-91
NISSAN 1968-86
FOR BRASS, USE 100-57

100-138

HITACHI
REPLACEMENT FOR
HONDA 16013-634-003
MAZDA 0324-23-315, D514-23-317, E563-23-315
NISSAN 16061-H6200, 16061-18010
SUBARU 49480-7451, 89435-6101



HONDA 1973-76
MAZDA 1976-85
NISSAN 1970-84
SUBARU 1970-92

FOR BRASS, USE 100-58

100-141

MIKUNI/SOLEX



LATE MODEL MITSUBISHI & CHRYSLER
APPLICATIONS

100-142

MIKUNI/SOLEX



LATE MODEL MITSUBISHI & CHRYSLER
APPLICATIONS

100-143

KEIHIN
REPLACEMENT FOR
HONDA 16000-PAO-015, 16013-PAO-005,
16013-PAO-015, 16049-PAO-005,
16049-PAO-015 (PRI & SEC)
ONE EACH REQ. PER CARB
6.6 & 7.4 GRAMS



(PRIMARY)

(SECONDARY)

HONDA

1980-87

100-144

KEIHIN
PLASTIC REPLACEMENT FOR
HONDA 16013-PEO-701



HONDA

1984-87

100-145

NIKKI
REPLACEMENT FOR
MAZDA F601-23-470,
HE24-23-451, 9651-0101



MAZDA

1983-85

100-146

NIKKI
REPLACEMENT FOR
MAZDA FE65-23-470, 9651-0141

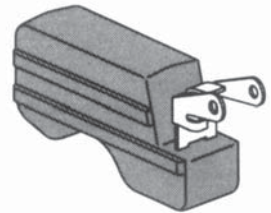


MAZDA

1986-93

100-148

NIKKI
REPLACEMENT FOR
CHEVROLET 94144722
ISUZU 8-94144722-0



CHEVROLET (SPECTRUM)
ISUZU (I-MARK)

1985-89
1985-89

100-140

AISAN
BRASS REPLACEMENT FOR
TOYOTA 21209-24480, 21209-27040



TOYOTA 1977-82
FOR BRASS, USE 100-60

100-149

HITACHI
HOLLEY UNIVERSAL MODELS 4010 & 4011
PLASTIC REPLACEMENT FOR HOLLEY 16R-587A
10.9 GRAMS



UNIVERSAL PERFORMANCE VEHICLE