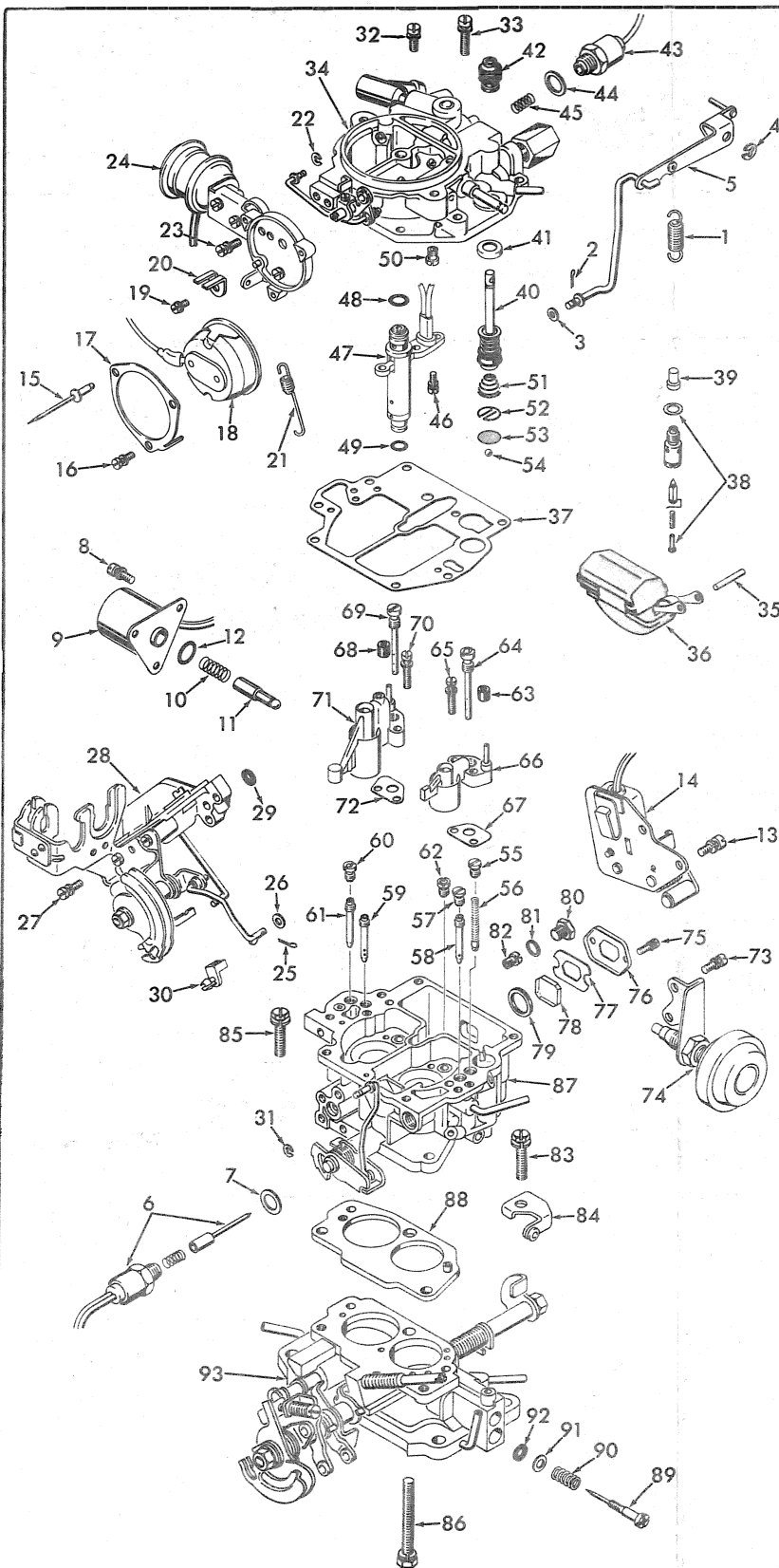


©7/91 TECHLIT CO.
Printed In U.S.A.

50-656-3

THE GENERAL DESIGN AND PARTS SHOWN WILL VARY TO INDIVIDUAL UNITS COVERED ON THIS INSTRUCTION SHEET.



USE THE EXPLODED VIEW AS A GUIDE. THE NUMERICAL SEQUENCE MAY GENERALLY BE FOLLOWED TO DISASSEMBLE UNIT FAR ENOUGH TO PERMIT CLEANING AND INSPECTION. WHEN NECESSARY REMOVE WIRES FROM CARBURETOR HARNESS CONNECTOR USING PROPER TOOL AND IDENTIFY WIRE LOCATION FOR PROPER REASSEMBLY. DRILL OR CUT OFF POP RIVET HEADS TO REMOVE CHOKE COVER BOWL VENT PLUNGER IS NOT REMOVABLE, NOTE SIZE OF PLUNGER SPRING AS IT DIFFERS FROM IDLE SHUT OFF PLUNGER SPRING. NOTE SIZES OF ALL JETS AND THEIR LOCATION FOR PROPER REASSEMBLY. RECORD SIZE BEFORE TO REMOVE IDEAL ADJUSTING NEEDLE. TURN IN THE PIN ON THE SIDE OF THE NEEDLE. TURN IN THE ADJUSTING NEEDLE HOLE. BEFORE REMOVING IDEAL NEEDLE, TURN IN COUNTING THE NUMBER OF TURNS IT TAKES TO LIGHTLY SEAT NEEDLE, RECORD FOR REASSEMBLY.

REF. NO.	REF. NO.
1. SPRING-PUMP LEVER RETURN	44. GASKET-SOLENOID
2. COTTER PIN-PUMP ROD	45. SPRING-BOWL-VENT PLUNGER
3. WASHER-PUMP ROD	46. SCREW & LKWSHR. (3)-
4. RETAINER-PUMP LEVER	A/F SOLENOID
5. PUMP LEVER & ROD ASSY.	47. SOLENOID ASSY.-AIR FUEL
6. SOLENOID VALVE-IDLE	RATIO
SHUT OFF	48. "O"-RING-SOLENOID (UPPER)
7. GASKET-SOLENOID VALVE	49. "O"-RING-SOLENOID (LOWER)
8. SCREW & LKWSHR. (3)-	50. JET-PR. SLOW AIR BLEED
SOLENOID VALVE ASSY.	51. SPRING-PUMP RETURN
9. SOLENOID VALVE ASSY.	52. RETAINER-SCREEN
COASTING RICHER	53. SCREEN-PUMP CHECK
10. SPRING-PLUNGER	54. BALL-PUMP INTAKE CHECK
11. PLUNGER-SOLENOID VALVE	55. PLUG-PUMP DISC. CHECK
12. "O"-RING-SOLENOID VALVE	56. BALL & SPRING ASSY.-PUMP
SEAL	DISC.
13. SCREW & LKWSHR. (2)-IDLE	57. PLUG-SLOW JET
SWITCH	58. JET-SLOW
14. SWITCH ASSY.-IDLE	59. JET-STEP
15. POP RIVET (2)-RETAINER	60. JET-RICHER AIR BLEED
16. SCREW & LKWSHR.	61. JET-RICHER
WIRED CLIP-RETAINER	62. JET-PRIMARY MAIN
17. RETAINER-CHOKE COVER	63. SEAL-PR. VENTURI TUBE
18. CHOKE COVER ASSEMBLY	64. JET, PR. MAIN AIR BLEED
19. SCREW-SPRING LEVER	65. SCREW & LKWSHR. (2)-PR.
20. LEVER-CHOKE COIL SPRING	VENTURI
21. SPRING-SEC. RETURN	66. VENTURI ASSY.-PRIMARY
22. RETAINER-CHOKE PULL OFF	67. GASKET-PR. VENTURI
LINK	68. SEAL-SEC. VENTURI TUBE
23. SCREW & LKWSH. (2)-	69. JET-SEC. MAIN AIR BLEED
CHOKE PULL OFF & CHOKE	70. SCREW & LKWSHR. (2)-SEC.
HOUSING	VENTURI
24. CHOKE PULL OFF & HOUSING	71. VENTURI ASSY.-SECONDARY
ASSEMBLY	72. GASKET-SEC. VENTURI
25. COTTER PIN-THROTTLE LINK	73. SCREW & LKWSHR. (2)-DASHPOT
26. WASHER-THROTTLE LINK	DASHPOT & BRACKET ASSY.
27. SCREW & LKWSHR. (3)-SEC.	74. SCREW (2)-COVER
DIAPHRAGM ASSY.	76. COVER-SIGHT GLASS
28. SECONDARY DIAPHRAGM AS-	77. GASKET-COVER
SEMBLY	78. SIGHT GLASS
29. GASKET-SEC. DIAPHRAGM ASSY.	79. SEAL-SIGHT GLASS
30. RETAINER (PLASTIC)-SEC.	80. PLUG-SEC. MAIN JET
DIAPHRAGM ROD	81. GASKET-PLUG
31. RETAINER (UPPER)-FAST	82. JET-SECONDARY MAIN
IDLE ROD	83. SCREW & LKWSHR.-BRACKET
32. SCREW & LKWSHR. (5)-BOWL	& THROTTLE BODY
COVER	84. BRACKET-PUMP LEVER SPRING
33. SCREW & LKWSHR. (2)-BOWL	85. SCREW & LKWSHR.-THROTTLE
COVER	BODY
34. BOWL COVER ASSEMBLY	86. SCREW & LKWSHR.-THROTTLE
35. PIN-FLOAT	BODY
36. FLOAT & LEVER ASSY.	87. BOWL ASSEMBLY
37. GASKET-BOWTL COVER	88. GASKET-THROTTLE BODY
38. NEEDLE & SEAT ASSY.	89. NEEDLE-IDLE ADJUSTING
39. SCREEN-NEEDLE SEAT	90. SPRING-IDLE ADJ. NEEDLE
40. PUMP ASSEMBLY	91. WASHER-IDLE NEEDLE SEAL
41. RETAINER-PUMP BOOT	92. SEAL-IDLE ADJ. NEEDLE
42. BOOT-PUMP	93. THROTTLE BODY ASSEMBLY
43. SOLENOID-BOWL VENT	

CLEANING MUST BE DONE WITH CARBURETOR DISASSEMBLED, SOAK PARTS LONG ENOUGH TO SOFTEN AND REMOVE ALL FOREIGN MATERIAL. CAUTION: DO NOT Prolong SOAKING OF PARTS CONTAINING RUBBER MATERIALS THAT ARE NOT REMOVABLE, MAKE CERTAIN THE CHOKING BORES ARE FREE OF CARBON DEPOSITS. WASH OFF IN SUITABLE SOLVENT. BLOW OUT ALL PASSAGES IN CASTINGS WITH COMPRESSED AIR AND CHECK CAREFULLY TO INSURE THOROUGH CLEANING OF OBSCURE AREAS. DO NOT SOAK DIAPHRAGM ASSEMBLIES, FLOAT, SILENCERS OR PARTS CONTAINING RUBBER MATERIALS.

REASSEMBLE IN REVERSE ORDER OF DISASSEMBLY. NOTE SPECIAL INSTRUCTIONS AND ADJUSTMENTS.

IDLE ADJUSTING NEEDLE (89)-TURN NEEDLE IN UNTIL LIGHTLY SEATED. THEN BACK OUT NUMBER OF TURNS RECORDED ON DISASSEMBLY. (DO NOT DRIVE SPRING PIN IN UNTIL CARBURETOR HAS BEEN ADJUSTED.)

CHOKE COVER ASSY. (18)-WHEN INSTALLING BE SURE LOOP ON CHOKE SPRING IS OVER THE UPPER ARM OF CHOKE SHAFT LEVER (20). MAKE SURE CHOKE SPRING HOUSING IS PROPERLY LOCKED ON LOCATION PIN (NON-ADJUSTABLE).

ADJUSTMENTS

