



88-823
Oxygen Sensor Socket

Standard Oxygen Sensors
6 Point With 25/32" Wire Opening



Fits 7/8" or 22mm
3/8" Drive

88-829
Oxygen Sensor Wrench

12 & 6 Point



Includes a 12 point and 6 point socket giving the technician the ultimate tool to remove oxygen sensors in confined areas.

The 12 point side enables the technician twice the number of clock angle attachment positions. This gives the technician the maximum accessibility to remove oxygen sensors in difficult areas.

The 6 point side provides the technician the maximum holding power for oxygen sensors that are corroded in place.

The new beefy design is 25% stronger.

Fits with all configurations of oxygen sensor wire/connectors.

88-830
Oxygen Sensor Wrench

12 & 6 Point 2 1/8" Offset



Includes a 12 point and 6 point socket giving the technician the ultimate tool to remove oxygen sensors in confined areas.

The 12 point side enables the technician twice the number of clock angle attachment positions. This gives the technician the maximum accessibility to remove oxygen sensors in difficult areas.

The 6 point side provides the technician the maximum holding power for oxygen sensors that are corroded in place.

The new beefy design is 25% stronger.

Fits with all configurations of oxygen sensor wire/connectors.

Designed with additional offset enabling use on LTI Gen II 5.7L HO MPFI V-8 found in the 1992 and later Chevrolet Corvette, 1993 and later Camaro and 1993 and later Pontiac Firebird / Trans Am also 1989 and later Corvette ZR1 with the LT5 5.7L DOHC SFI V-8.

88-831
Oxygen Sensor Wrench

Shielded Applications



This unique tool has been designed to R&R shielded oxygen sensors currently found on Toyota and Lexus vehicles.

The depth and outer diameter of the socket are critical features enabling it to fit in the limited space of the heat shield.

This tool features a 12 point double hex enabling the technician twice the number of clock angle attachment positions versus a 6 point design. For maximum strength this tool is forged chromolly steel and comes in a black finish.



88-832

**Oxygen Sensor Bung
Thread Repair Kits**

Includes: 1 Tap, 1 Insert Tool, 6 Repair Inserts



88-835

Oxygen Sensor Wrench

6 Point 3/8" Drive
1.2" Overall Depth



The 6 point side provides the technician the maximum holding power for Oxygen Sensors that are corroded in place.

Fits with all configurations of Oxygen Sensor wire connectors.

88-836

Oxygen Sensor Socket

Standard Oxygen Sensors
6 Point With 9/32" Wire Opening
Fits 7/8" or 22mm 3/8" Drive



88-833

**Oxygen Sensor
Bung Insert Kit**

Includes: 6- Repair Inserts



88-837

Oxygen Sensor Chaser

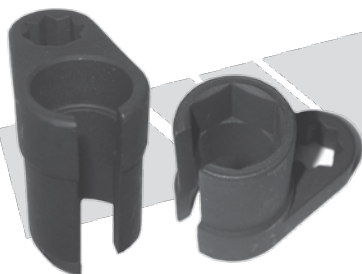
M18x1.5 Thread Chaser 3/8" Drive



88-834

Oxygen Sensor Wrench

Standard Oxygen Sensors
Fits 7/8" or 22mm 2" Overall Depth





Note: All parts listed on this page are available in a box of five pieces.
The part number for a box of five will have a "P" suffix. Example: 90-185P or 90-187SSP

 <p>90-186 O2 Sensor Bung - Stepped 1215 Mild Steel 10mm Threads 0.980" OD x 0.735" Step x 0.320" Thick</p>	 <p>90-186SS O2 Sensor Bung - Stepped 303 Stainless Steel 10mm Threads 0.980" OD x 0.735" Step x 0.320" Thick</p>	 <p>90-187 O2 Sensor Bung - Stepped 1215 Mild Steel 12mm Threads 0.985" OD x 0.740" Step x 0.315" Thick</p>	 <p>90-187SS O2 Sensor Bung - Stepped 303 Stainless Steel 12mm Threads 0.985" OD x 0.740" Step x 0.315" Thick</p>
 <p>90-189 O2 Sensor Bung 1215 Mild Steel 12mm Threads 1.0" OD x 0.500" Thick</p>	 <p>90-189SS O2 Sensor Bung 303 Stainless Steel 12mm Threads 1.0" OD x 0.500" Thick</p>	 <p>90-164 O2 Sensor Bung 1215 Mild Steel 18mm Threads 1.0" OD x 0.400" Thick</p>	 <p>90-164SS O2 Sensor Bung 303 Stainless Steel 18mm Threads 1.0" OD x 0.400" Thick</p>
 <p>90-164SS-C O2 Sensor Bung w/Curve 303 Stainless Steel 18mm Threads 1.0" OD x 0.400" Thick</p>	 <p>90-199 O2 Sensor Bung 1215 Mild Steel 18mm Threads 1.0" OD x 0.500" Thick</p>	 <p>90-199SS O2 Sensor Bung 303 Stainless Steel 18mm Threads 1.0" OD x 0.500" Thick</p>	 <p>90-184 O2 Sensor Bung - Stepped 1215 Mild Steel 18mm Threads 1.0" OD x 0.875" Step x 0.530" Thick</p>
 <p>90-184SS O2 Sensor Bung - Stepped 303 Stainless Steel 18mm Threads 1.0" OD x 0.875" Step x 0.530" Thick</p>	 <p>90-207SS-C O2 Sensor Bung w/Curve 303 Stainless Steel 18mm Threads 0.985" OD x 0.550" Thick</p>	 <p>90-206SS-C O2 Sensor Bung - 62° Angle w/Curve 303 Stainless Steel 18mm Threads 0.985" OD x 0.824" Thick</p>	 <p>90-190 O2 Sensor Bung - 62° Angle 1215 Mild Steel 18mm Threads 1.0" OD x 0.975" Thick</p>
 <p>90-190SS O2 Sensor Bung - 62° Angle 303 Stainless Steel 18mm Threads 1.0" OD x 0.975" Thick</p>	 <p>90-195 O2 Sensor Bung 1215 Mild Steel 18mm Threads 1.0" OD x 1.000" Thick</p>	 <p>90-195SS O2 Sensor Bung 303 Stainless Steel 18mm Threads 1.0" OD x 1.000" Thick</p>	 <p>90-195SS-C O2 Sensor Bung w/Curve 303 Stainless Steel 18mm Threads 1.0" OD x 1.000" Thick</p>
 <p>90-203 Bung Plug - Internal 6mm Hex 1215 Mild Steel 12mm Threads 0.625" OD x 0.400" Thick</p>	 <p>90-203SS Bung Plug - Internal 6mm Hex 303 Stainless Steel 12mm Threads 0.625" OD x 0.400" Thick</p>	 <p>90-204 O2 Sensor Bung 1215 Mild Steel 12mm Threads 0.625" Hex. 0.570" Thick</p>	 <p>90-204SS O2 Sensor Bung 303 Stainless Steel 12mm Threads 0.625" Hex. 0.570" Thick</p>
 <p>90-200 Bung Plug - Internal 8mm Hex 1215 Mild Steel 18mm Threads 0.875" OD x 0.510" Thick</p>	 <p>90-200SS Bung Plug - Internal 8mm Hex 303 Stainless Steel 18mm Threads 0.875" OD x 0.510" Thick</p>	 <p>90-185 O2 Sensor Bung Plug 1215 Mild Steel 18mm Threads 1.0" Hex 0.650" Thick</p>	 <p>90-185SS O2 Sensor Bung Plug 303 Stainless Steel 18mm Threads 1.0" Hex 0.650" Thick</p>